



**95 Century Buildings Patriotic Place, St Helier, Jersey, JE2 3AF**  
**£1,800**



## **Patriotic Place, St Helier, JE2 3AF**

A spacious two bedroom apartment situated on the third floor of this prestigious building. The accommodation is in excellent order with modern open plan living space. The apartment is ideally located for all town amenities and close to the beach at West Park. PARKING for 1 car. No smoking and not suitable for pets. QUALIFIED. Available early May.

### **Kitchen**

A spacious kitchen/diner with fitted cupboards at eye and base level with indesit washing machine, small dishwasher, baumatic electric oven and hob with fan over. Integrated fridge freezer. Antico tile flooring.

### **Lounge**

A spacious lounge with wooden laminate flooring.

### **En-Suite Bedroom**

Double bedroom with en-suite shower facilities, WC & WHB. Carpet as laid.

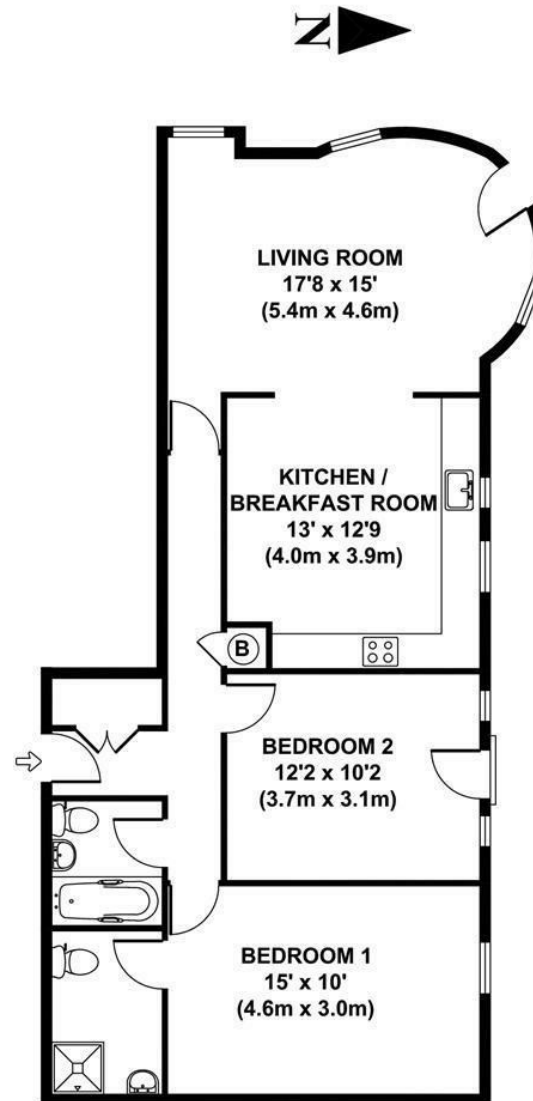
### **Bedroom**

Double bedroom with juliet balcony. Carpet as laid.

### **Bathroom**

Bathroom with white WC, WHB and bath with shower over.





**APPROX. GROSS INTERNAL FLOOR AREA 810 SQ FT / 75 SQ M**

© Copyright Slomans 2007.

